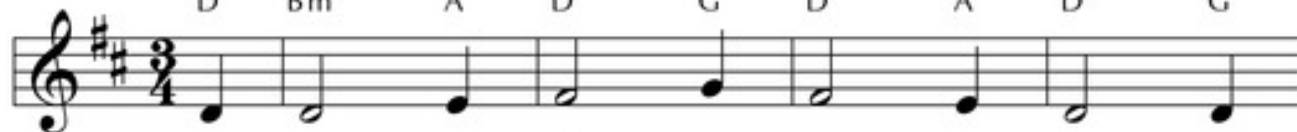


# What Star Is This, with Beams So Bright 152

Capo 2: (C) (Am) (G) (C) (F) (C) (G) (C) (F)  
 D Bm A D G D A D G



1 What star is this, with beams so bright, more  
 2 'Tis now full-filled what God de-creed, "From  
 3 While out-ward signs the star dis-plays, an  
 4 O Je-sus, while the star of grace im-

(C) (G) (C) (F) (C) (G)  
 D A D G D A



love-ly than the noon-day light? 'Tis  
 Ja-cob shall a star pro-ceed;" and  
 in-ward light the Lord con-veys and  
 pels us on to seek your face, let

(Am) (D7) (G) (C) (F) (C) (Dm)  
 Bm E7 A D G D Em



sent to an-nounce a new-born king, glad  
 lo! the east-ern sa-ges stand to  
 urg-es them, with ten-der might, to  
 not our sloth-ful hearts re-fuse the

(G) (C) (G) (C) (F) (G) (C)  
 A D A D G A D



ti-dings of our God to bring.  
 read in heaven the Lord's com-mand.  
 seek the giv-er of light.  
 guid-ance of your light to use.