

FEBRUARY 13, 2019 **WEDNESDAYS @ BETHANY**

**BETHANY  
PRESBYTERIAN  
CHURCH**



Welcome to our weekly newsletter! ***Wednesdays at Bethany*** will include important announcements for the life of the congregation -- the most important action items will be at the top. If you'd like to receive the email without the PDF attachment, please let us know. And if you would rather NOT receive this newsletter, please let us know and you will be removed from the list.



***2018 Giving Statements*** are available to be picked up at the church. If you would like yours mailed to you, please contact the church office.

***Are you interested in being a liturgist?*** There is a 2019 sign up sheet on the bulletin board in the hallway. If you are interested, but not able to do every Sunday in a given month, talk to Tamra Hollenbeck – we can find others to fill in!

***Question and Answer:*** Every month, on the Sunday immediately following the session meeting, an elder will moderate a question and answer session following worship. You are invited to ask any questions about session business or anything about the life of the church. Next meeting: Sunday, February 17<sup>th</sup>.

### **Monday Bible Study**

Time: 12-1 pm

Place: Bethany Presbyterian Church

This is a special time of prayer, personal sharing, laughter, and the study of Scripture.

For the next few weeks we will be studying the Parables of Jesus.

What is a parable? Why did Jesus use them?

And - What is their meaning for us today?

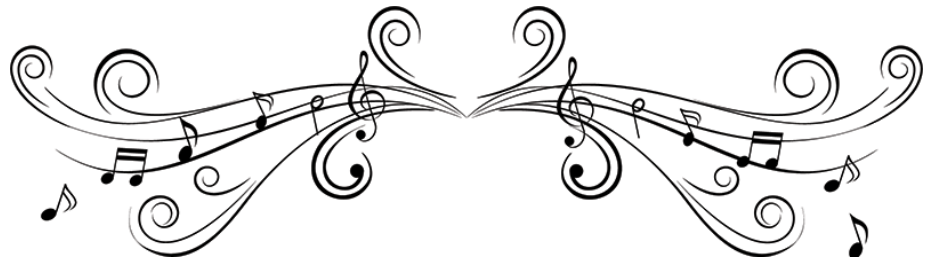
The invitation is open to everyone. Please come and join us.

For more information call Rev Richard Pyke - 650-416-4421

***Retreats at Westminster Woods:*** the Men's Retreat is Feb. 15-17. Registration is open for the Men's Retreat, Go to <https://www.westminsterwoods.org> for more information and to register.



**Sign-ups for Audio/Visual Help:** There is a sign-up sheet for people able help with the power point and for those who can work the soundboard. There were several trainings in the early summer for how to use the sound board, and we are looking for volunteers who have been trained to sign up for a Sunday or two so we can share the work with more than just a few! Please look for the sign-up sheet on the back table of the sanctuary. If you have any questions, please contact Tamra Hollenbeck or George Lynch. Thanks!!



**Music Organization:**

- There is a sign up sheet in the Narthex that include all the music slots for each Sunday from January through April. Themes and scriptures are included when I have them.
- Anyone who wishes to sign up may do so – for a solo, a small group, or a larger group of musicians.
- Sign up for the specific spot(s) you want, and fill in all the info requested
- The person who signs up is responsible for arranging for the musicians and for any rehearsals necessary, as well as for instruments and/or accompanist.

**Shelter Ministry Notes:** For many years, one of the ways the Bethany Congregation has supported the San Bruno Catholic Worker and the Shelter at St. Bruno's Church in San Bruno is by providing meals on the second weekend of each month. Currently, we provide dinner on Friday night and breakfast on Saturday morning on the second full weekend of the month. Chris Angeles and Steve Cady and Tamra Hollenbeck share the Friday night dinner duty by providing a full meal for about 12 people, Chris and Steve one month, and Tamra the next. Roxane Wales brings breakfast for that same group of people bright and early on Saturday mornings. If you would be interested in helping support the work of the shelter in this way, please contact Chris, Tamra, Roxane, or Rina, and we can provide more information about this project. Thanks!!

**We want everyone to experience a warm welcome** when they come to worship on Sunday mornings! Please consider being a "Greeter" for a month. Sign up sheet in the narthex, and see Kathy Quickert if you have any questions!





### **Catholic Worker Hospitality House (the San Bruno Shelter)**

Rina Ranahan is Bethany's new representative to the San Bruno Shelter. Please call her at 650-291-6979, if you are interested in serving on this committee.

### **Urgent Items Needed: Canned Fruit, paper napkins and Old fashioned Oatmeal and Cereal**

#### **Other needs:**

Chili, stew, ravioli, and applesauce  
Coffee, cocoa, tea, white sugar, and brown sugar  
Bread, milk, and margarine  
Pasta and pasta sauce  
Peanut butter and jam  
Travel-size toiletries  
Soup bowls and coffee mugs  
New or clean, used bath towels and blankets  
33 gal trash bags, sandwich bags, and brown paper lunch bags  
Cleaning products: dishwashing liquid, household cleaners, cleanser, laundry soap, and bleach  
Paper goods: paper towels and Kleenex  
Toothbrushes, toothpaste, and razors  
Small to medium-sized plastic storage ware  
Sweatshirts, hats, gloves, and socks

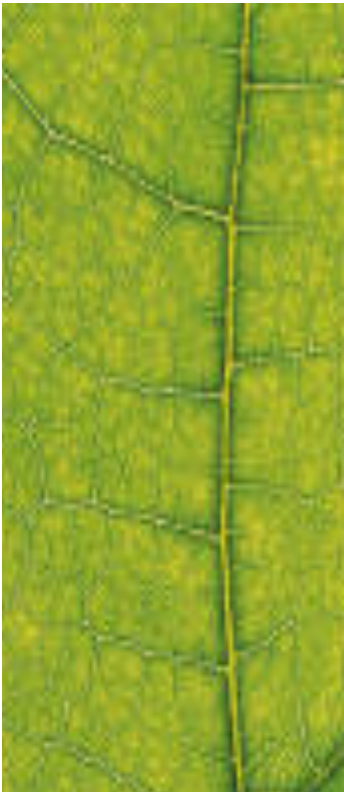
### **Meeting of CoDependents Anonymous at Bethany Presbyterian Church!**

**Co-Dependents Anonymous (CoDA)** is a twelve-step program for people who share a common desire to develop functional and healthy relationships. In CoDA, we help one another by supporting each other in healthy ways and by practicing the 12 Steps. Please come and see if a CoDA meeting is a good fit for you. Sharing at meetings is optional. We meet downstairs in Room 9 every Monday beginning at 6:30 p.m.

**Coins for SafeHouse:** We are now collecting all coins for San Francisco SafeHouse. Kathleen Mitchell will put out the coin bottle on Sunday mornings, and she and Jorie Abbott will continue to roll the coins and send them off. So check your pockets and drop your change in the jar! In April, they sent a check for \$75 to Safe House.

### **Save the Date – Spring Events**

- **Sat. March 16**, 6 p.m.: Ceili – dinner and music from The Bethany Brawlers
- **Sat. April 6**, 10 a.m. – noon – Rise Against Hunger
- **Sat. April 27**, 1 – 3:30 p.m. – Bethany Spring Tea



**Children's Worship Center:** An area has been set up at the back of the sanctuary with a small table and chairs and age and church-appropriate activities for school-aged and younger children. We invite families to bring their young ones and encourage them to make use of this new area, allowing their children to remain in the sanctuary during the worship service while enjoying the experience together! Please welcome your family, friends, neighbors, and their young families to join us in worship anytime!! If you have any questions or suggestions about this idea, please speak to Melinda Jones or Tamra Hollenbeck. We welcome your thoughts!

**Worship Reflection sheets** are available in the Narthex in the large wooden literature rack. If you have any comments about the worship service – music, liturgy, order, etc. – please write them down and put them in the pastor's mailbox on the outside of her office door.

**Did you know that Bethany has our own YouTube Channel?** We do! There are actually two ways to share with your friends and family recordings of our lively activities here at Bethany. You can go to our website videos page: <http://bethanypcusa.org/photos/videos.html>, or directly to our YouTube Channel: <https://tinyurl.com/yc6vnfww> You will see videos from Thanksgiving, Christmas, the Ceilis, and many other wonderful events! Remember to "like" and share your favorites!

**Stamp Ministry Guidelines for Collecting Cancelled Stamps**  
Be sure to save your cancelled stamps for the Sunday School Stamp Ministry. Cancelled stamps can be given directly to Roxane Wales or put in her box in the hallway. Please click here to see a list of stamps requested: <http://bethanypcusa.org/we-do/stamp-ministry.html>



**You are  
God's  
beloved,  
just as  
you are.**



[www.mlp.org](http://www.mlp.org)





**Bethany's Purpose Statement:**

Bethany's purpose is to provide a nurturing and energizing environment to feed the soul so we can go out into the world and reflect the glory of God, the love of Jesus Christ, and the power of the Holy Spirit.

**Bethany's Welcoming Statement:**

We don't yet know who you are, but we do know that you are a dearly beloved child of God, and you're already welcome here. We invite you, on your unique spiritual journey, to join us in the life and ministry at Bethany.

**Due Dates**

**For W@B:** Tuesday morning.

**For Sunday announcements:** Wednesday morning. Email them to the church office or leave them in the mailbox on the outside of the office door.

**Calendar of Meetings & Events**

- 2/13 Prayz rehearsal, 6:30 p.m.  
Chancel Choir rehearsal, 7:30 p.m.
- 2/14 Ceili rehearsal, 7 p.m.  
Outreach committee mtg., 7 p.m.
- 2/17 Deacons' meeting, following worship
- 2/18 CoDA meeting, rm. 9, 6:30 p.m.

**Note to Committee Chairs:** Please notify the church office before you change a meeting date/time to be sure there are no conflicts. Thank you.

**Contact Information:**

- Rev. Kathryn Pyke can be contacted through the church office, or you can email her at: kathrynbethanypresbyterian@gmail.com. If you have an emergency requiring a pastor, you can call Kathryn's cell phone: 650-416-4405.
- Roberta Henry, our secretary, is in the office Tues. from 1-4 p.m., and Wed – Fri., 10 a.m. – 1 p.m.

Visit our Website at:

[http://  
bethanypcusa.org](http://bethanypcusa.org)

And on Facebook!  
[BPC/Facebook](#)

2400 Rosewood Dr  
San Bruno, CA 94066  
Ph: 650-589-3711  
[bethanypres@  
bethanypcusa.org](mailto:bethanypres@bethanypcusa.org)