
June @ Bethany

Bethany Presbyterian Church

From the Pastor



Dear friends,

In January, the Sesame Street Character Elmo posted a question on his social media account: "Elmo is just checking in!" "How is everybody doing?" After over 110 million views, Elmo responded, "Wow! Elmo is glad he asked," "Elmo learned that it is important to ask a friend how they are doing." People from all walks of life responded, including President Biden, who wrote, "We have to be there for each other, offer our help to a neighbor in need, and above all else, ask for help when we need it," Biden wrote. "Even though it's hard, you're never alone." After

millions of views, Sesame Street's official account replied with links to mental health resources.

As we enter the month of June, about half way through the year, a time for some, of new schedules, new family routines, it's always worth checking in.

If you've ever tried to change a habit, start something new, stop a bad habit, diet, save money, you know that changes are not easy. I for one, seem to find many ways to unconsciously sabotage something that I think I really want. It can be frustrating to struggle to change a habit even when we know that we want the change. I have been trying to reduce my media consumption. Social media is a trap sometimes because along with the people and news and interests that I would like to see, are all the surrounding flashes of other things that scroll by. Social media experts and psychologists have coined the term "doom scrolling." Doom scrolling doesn't only happen on a computer screen. Putting oneself in the field of drama and trauma whether it's a favorite tv show where characters are always fighting and yelling, or watching too much news, or playing video games with death and destruction, loads up our nervous systems beyond their capacity.

Instead, we can engage in what has been called Hope Questing. (Yes, there's a game called Hope's Quest, where a character named Hope goes around finding all of the bad stuff that escaped from Pandora's box. That's not what I mean.) Hope questing is what happens when you find the best in something. Not just to be cheerful, not just to be happy, not just to pretend against all facts that something is good. But regular engagement in society where we allow ourselves to find what is hopeful in what is happening. Did you see that guy help that person? New hope for the kindness of people. Did you hear that kid stick up for their friend who was being bullied? New hope for the younger generation.

Here are three things that bring me hope this month:

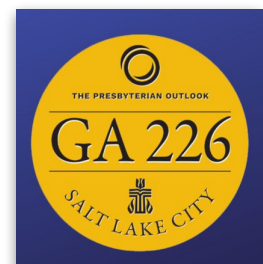
San Mateo County Pride Sunday 6/8
smcpridecelebration.com



Juneteenth



PCUSA General Assembly
Our denomination looks
to the future!



The Patio is open,
Pastor Deb

Community Life



The Bethany Ruth Covenant Group will be meeting on Monday, June 3 at 6:30 pm at the church. Please note the change of date. The meeting will include our usual check-in time, fellowship, refreshments, prayers, and sharing. Joining by Zoom is available if you are not able to attend in person. Please let Tamra Hollenbeck know if you would like to receive a Zoom invitation, and we'll send one to you.

The Ruth Group celebrated Pam Matthews and her long and loving connection with Bethany and the Ruth Covenant Group on May 6 with a delightful meal prepared with love and expertise by Judy Lozzi. Many additional Ruthies joined for this special event, and Pam was lifted up and surrounded with the best the group has to offer. Pam and Fred moved to Missoula, Montana on May 21, and they will be sorely missed.

Deacons' Luncheon

The Bethany Deacons will host a "Welcome Summer" Luncheon on Sunday, June 2, after worship. All are welcomed to join in a special luncheon (probably with some leftovers from the Spring Tea the day before!!). Please plan on sharing in the fellowship of each other as we sit and enjoy the company of our Bethany friends and family.



Farewell Reception for Pam and Fred Matthews

Pam and Fred Matthews, long-time members and loving supporters of Bethany Presbyterian Church, have moved to Missoula, MT, to be nearer to their two beautiful daughters Abby and Hannah, their son-on-law Eric, and grandsons Sorin and Avery. While we will miss them terribly, this move is a bit of a dream come true, and we wish them all the best. There was a Farewell Reception in their honor on Sunday, May 19 following worship. A blessing tree was provided, and the tree was adorned with cards and best wishes for Pam and Fred to bless them on their journey. A fine luncheon was provided by the Bethany Deacons and several other Bethany members for all to enjoy. Pam reports that they made it safely after a long two-day road trip to Missoula, and they were greeted with a "Welcome" banner and bowl of popcorn created by Sorin and Avery! That must have been a wonderful way to enter their new adventure. Blessings for a gentle and low-stress landing!

Dear Bethany family,

What a wonderful gathering of community and friends that met after our service on May 19. It was perfect and typical Bethany with hugs, special messages, the best food, and the warm send-off for Fred and me. I know you know how difficult the moving process has been for us because, after all, Fred and I were married right there in the sanctuary in 1982 and we have thrived in the supportive embrace of our people there. But we made the decision to uproot and be where our daughters and grandchildren are...a very big change. We thank you all for your good wishes, cards, and gifts but most of all I ask you for prayers for us as we make Missoula our home. We will hold you all in our hearts and, of course, welcome a visit from you and of course phone calls and letters are special. Don't be surprised if you see us periodically...in fact Fred is likely to be at church for the next couple Sundays since he's finishing up several things, including Choral Artists performances. I'll be back too. California is in my heart.

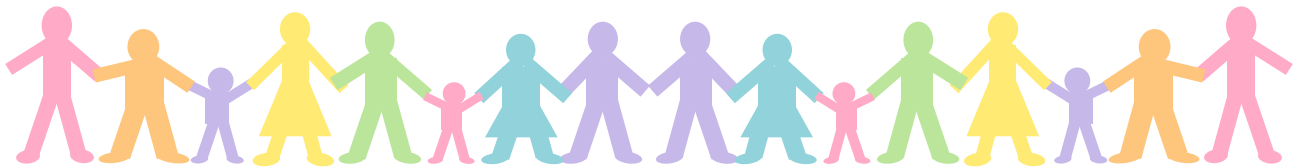
Pam and Fred Matthews

518 E. Central Ave. | Missoula, MT 59801 | fpmatthews@aol.com



Worship Notes

The Chancel Choir will celebrate the end of their choir season on Sunday, June 9. Jessica Reddell Popovich has invited some of her music students to share their music with our congregation during the summer months, and we can look forward to listening to some delightful talent in our worship services. Prayz Band will continue to provide music throughout the summer months as well. We will continue to rehearse on Wednesday evenings from 5-6:30 pm, and you are welcome to join in if you feel so moved. Also, summer is a time when others are invited to share their musical talents with the congregation. If you would like to present something, please let Tamra Hollenbeck or Jessica know two weeks ahead of time so you can be added to the worship service. Many blessings to all of our talented Chancel Choir members as they take a well-deserved summer break.

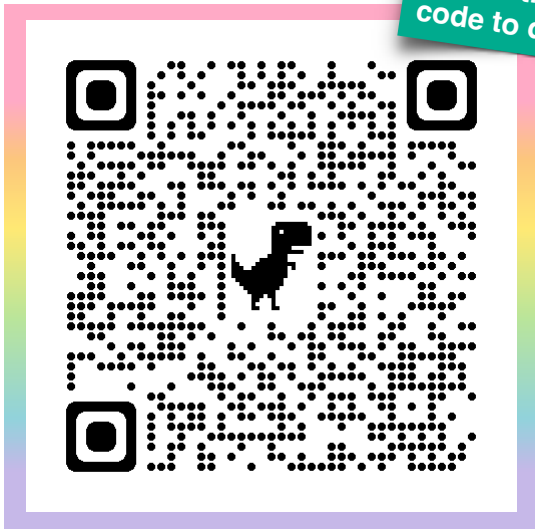


Spring Tea

Bethany Presbyterian Church will be hosting a Spring Tea on Saturday, June 1 at the church from 12-2:30 pm. A delicious menu is being planned, complete with tea sandwiches, fresh fruit, a variety of special cookies, scones and lemon curd, and your choice of tea. Kathleen Mitchell has offered to share her large collection of tea cups and tea pots with us for the event. Tickets will be \$25 each and will include an opportunity to win a special basket of goodies! Participants will also be able to purchase additional chances to win the baskets, which will include these themes: Kitchen supplies, 49ers, Pasta, Gardening, and Tea. Proceeds from the Tea will be donated to the RotaCare Coastsides Free Medical Clinic in Half Moon Bay. This is a clinic staffed by volunteers, including our own Chris Angeles. They provide free medical care for farmworkers, nursery workers, restaurant, and domestic workers with no health insurance. The program will include additional information about the clinic, and there will be an opportunity to donate to the clinic even if you are not able to attend the tea.

Please plan now to join us for this lovely afternoon of fellowship, and please invite your family and friends to come too. Ticket are available on Sunday mornings after worship. We look forward to hosting this event for the first time since the pandemic! If you have questions, please contact Kathy Fogle, Jorie Abbott, Lyn Hughes, Robin Villines, or Tamra Hollenbeck.

Scan the QR code to donate!



Bethany Presbyterian Church Presents

Spring Tea 2024

Benefitting RotaCare Coastsides Free Medical Clinic providing free healthcare to those with limited access

Saturday, June 1st
Noon ~ 2:30 p.m.
2400 Rosewood Dr, San Bruno
Tickets \$25



Birthdays

- 4 - Paul Feliciano
- 5 - Knox Parker
- 19 - Bonnie Morgan
- 19 - Glenn Carlson
- 22 - Nancy Crawford

Anniversaries

- 1 - Chris Angeles and Steve Cady
- 2 - Ken and Roberta Henry
- 13 - Ryan Hood and Bamboo Lin

Monthly Activities

Sundays: Worship at 10:00 am
 Coffee Hour 11:00 am
 (rehearsals start 8:30 am)

Wednesdays: Prayz 5:00 pm
 Chancel Choir 6:30 pm
 Prayer Group 6:30 pm

Submissions for W@B: Tuesday mornings.

Submissions for the July newsletter:
 Tuesday, June 18

- 1st Sunday: Communion at Worship Service
- 2nd Sunday: Worship Committee 11:00 am
- 2nd Monday: Ruth Covenant Group 6:30 pm
- 2nd Tuesday: Session 4:30 pm
- 3rd Sunday: Deacons Meeting 11:30 am
 Buildings & Grounds and
 Community Action committees
 – as scheduled

Session Highlights - May 16, 2024

Clerk’s Report (Roxane Wales)

- Bob Johansen joined May 5, 2024.

Pastor’s Report (Rev. Debra McGuire)

- Discussion regarding Bethany strong points.
- Consistency of people attending.
- Financial & volunteer giving remains high.

Financial Trustees Report (Lyn Hughes)

- Quarterly financial reporting:
- As of March 31, 2024, ending balance \$11,562.21.

Buildings & Grounds Report (Dave Wales)

- Parking lot secured entrance & exit will be completed soon.
- Dave will write an article for June@Bethany.
- Looking for Electrician for an electric panel upgrade.
- Will be creating & sharing an ongoing task list.

Community Action Report (Lyn Hughes)

- Planning School Supply Drive & Thanksgiving Dinner.

Personnel Report (George Lynch)

- Researching ways to expand the choir - Craig’s List? NextDoor?

Worship Report (Pam Matthews)

- Deb & Tamra will coordinate Worship.
- (Thank you, Pam, for leading Worship Committee.)

Other Business

- Discussion of Rev Deb’s work on Presbytery committees.

Next Session Meeting - June 11, 2024 @ 4:30 PM



Community Action

Ongoing donations to Catholic Worker Hospitality House continued throughout the quarter.

Financial Trustees

Financial Issues:

- In progress: replacement of our antiquated electrical panel for maximum efficiency. Next steps 1. Update electrical panel, 2. Decide on solar energy panels/installation, and 3. Install heat pump.
- In progress: Room 9 clean-up, work continues on this room, and more will be done now that Jessica Reddell Popovich has returned from leave.
- In progress: The Kitchen Update Committee cleanup and cleanout. Another cleanup day is being scheduled. Lowe's could not provide any assistance as a consultant as they don't come out to customer locations. We have started to look for kitchen remodel consultants in San Mateo County on the internet.
- Patio repair – on hold for now – suggestion was also made to extend patio to the edge of the west parking lot and possibly include a labyrinth.
- Upper Roof Repair – on hold for now.
- In progress: On-line giving opportunities. We have received steps to put information on-line from WFB, probably first through FaceBook.
- Global Witness and Peacemaking Offering – need a decision on where/what to do with the 25% of the 2023 offering (\$205.25).
- Discuss \$5,000 donation to CWHH for roofing project on 2nd Avenue house. Funds have already been promised from various sources. Pledged/Given to date: \$7,250.00.

2024 March and Quarterly Information: (apologies for bookkeeper delay)

Balance forward 12/31/23	\$15,417.16
Income	\$55,094.71
Expenses 1Q24	(\$58,949.66)
Ending Balance 3/31/24	\$11,562.21

Building & Grounds Committee

Chains Across Driveways Project

The “Chain Gang” Project is complete. Due to ongoing issues with problematic behavior “after hours” in our upper and lower parking lots, we have installed chains across each driveway entrance/exit to prohibit entry during after hours.

The Sikhs have been informed of this new protection for the church. They have a key, and because they are generally here earlier (8 AMish) and leave later (8 PMish) will usually manage this daily. They will lower the chains (locked with 4 keyed Masterlocks) in the morning and raise and lock the entrances when they leave. The chains have been clearly marked with reflective tape so as to be readily visible.

Our key will be placed in a glass jar in the hose caddy by the “back door” (south facing) entrance in case we need to raise or lower the chains.

Dave Wales



Our Purpose Statement

Bethany's purpose is to provide a nurturing
and energizing environment to feed the soul
so we can go out into the world and reflect the glory of God,
the love of Jesus Christ, and the power of the Holy Spirit.

Our Welcoming Statement

We don't yet know who you are,
but we do know that you are a dearly beloved child of God,
and you are already welcome here.
We invite you, on your unique spiritual journey,
to join us in the life and ministry of Bethany Presbyterian Church.

Bethany Presbyterian Church

2400 Rosewood Drive
San Bruno, CA 94066
(650) 589-3711

bethanypres@bethanypcusa.org • bethanypcusa.org

Bethany is a member of More Light Presbyterians
mlp.org



MORE LIGHT
PRESBYTERIANS

