

December@Bethany

Bethany Presbyterian Church

2021

Welcome to our monthly newsletter! Each month, the newsletter will feature more articles about the goings-on at Bethany, committee reports, and other items of interest. Ongoing announcements can be seen on the website.



Dear friends,

Am I the only one who feels like going to bed at around 4:30 each night, as darkness comes? That's not too early, is it?

I really prefer light to darkness!

December is the month that Christians move through the Advent season toward the day when we celebrate the birth of the Light of the World, our Lord Jesus Christ.

Light is a commodity that often seems in short supply. In those dark times, Psalm 139 reminds us that "even there God's hand will guide me, God's right hand will hold me fast." The darkness that our world, our country, and our communities have been through in times past and in more recent times has been hard, and real, and exhausting.

This time of year is not a time to ignore any of that, or how it makes us feel. But this time of year also grants light to that darkness and is the time when we remember that the love of God and the light of the world was born a babe in a manger. We celebrate the birth of the One who came to bring us the Light that will never dim, will always seek us out, and will always show us the way.

*"They looked up and saw a star
Shining in the east beyond them far,
And to the earth it gave great light,
And so it continued both day and night."*

*Christmas blessings,
Pastor Deb*

“A Surprising God: Advent Devotions for an Uncertain Time: by Thomas G. Long, Donyelle C. McCray: “The world is slowly emerging from the worst global emergency in a century, and the myriad struggles of the contemporary moment—division, isolation, illness, and uncertainty—make living our faith a challenge. For Christians, a number of questions have gained new urgency: Where do we find hope when it seems in such short supply? Where are the signs of God's peace in this divided world? Where do we find a deeper sense of joy?”

If you are interested in participating in an **Advent Study** of the devotional above, please contact Pastor Deb to get a book! **The study will meet at 7 p.m. in person AND via Zoom, starting Monday, Nov. 29th, and continuing Dec. 6th, 13th, and 20th.** Pastor Deb will send participants the Zoom meeting invitation via email.



HOPE 🍃 **PEACE** 🍃 **JOY** 🍃 **LOVE**

Do you know?

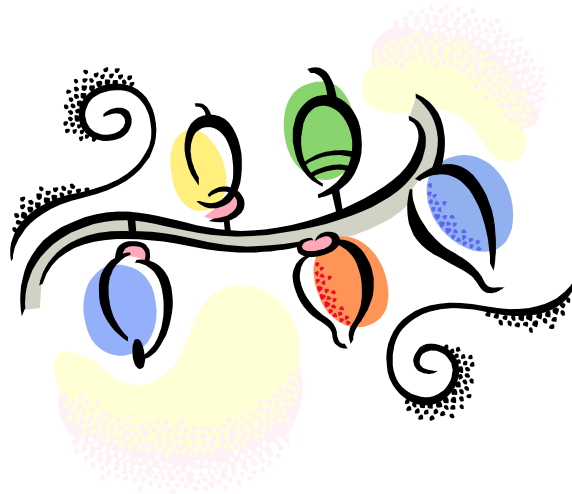
Did you know which subject related to the future of our world and our well-being is one of the most difficult to talk about? Our diet. The daily choices we make to nourish ourselves. We are beginning, though, to address the impact American food production has had on our health as well as climate change. According to a Yale study last year:

Globally, changes to food production and consumption, including reducing food waste and shifting to a more plant-based diet, are critical to reducing global warming and other environmental impacts.

You can take a look at the full study

here <https://climatecommunication.yale.edu/publications/climate-change-and-the-american-diet/>

Perhaps we can engage more in discussion about big and small changes we can all make in our lives and seek to support organizations that further research and advocacy in this important step. Ideas welcome!



Donations for San Bruno Hospitality House: There will be a plastic bin outside the door closest to the lower parking lot at Bethany for shelter donations so people can continue to donate for the shelter. The box will be periodically checked and items taken down to the shelter. Any questions about this please contact Rina Ranahan: (650) 291-6979.

A current list of shelter needs is on our website: <http://bethanypcusa.org/we-do/shelter-needs.html>

You can read more about the shelter on their website: <http://catholicworkerhospitalityhouse.org/>

You are invited to write Christmas cards and greetings to Randy Johansen and some of our other members who aren't able to get to church on Sundays. The Bethany Deacons will have Christmas cards available on Sunday, December 12, after worship for you to sign and add your greeting, and you are welcome to add a small item to a gift box for Randy if you would wish to do so. The Deacons will mail any cards that we receive. Thanks for considering this as a way to bring some holiday cheer to our beloved Bethany friends!



NOVEMBER 16, 2021 SESSION MEETING

Mtg held in BPC narthex masked/distanced - 7:13 PM - 8:54 PM.

Pastor Deb opened the meeting in prayer, followed by a meditation on Philippians 4:8-9.

- Tamra Hollenbeck will share Session meeting minute duties in 2022.
- Financial Trustees have a draft 2022 budget in place.
- Stewardship pledges will be dedicated Sunday, Nov. 21, 2021.
- Pastor Deb 2022 contract has been approved by the Presbytery.
- Global Witness/Peacemaking offering, BPC will donate 25% (\$188.75) to SafeHouse in honor of Freda Lutz.
- Dave met with a tree expert to trim trees where needed and discussed/planned taking down dead trees.
- Community Action/Life will lead Christmas Toy Drive.
- Discussion-Giving environment-friendly gifts.
- Dec. 26 Worship will bring a beloved Hymn-Sing.
- Discussion-Consideration of renting BPC to outside groups.
 - By consensus it is agreed to rent our large inside space while following our Covid rules regarding social distancing, ventilation and mask-wearing.
 -

Our next Session Meeting is scheduled for Tuesday, December 21, 2021 at 7 PM BPC in person, masked/distanced.

If you have any questions before then, please contact Roxane Wales at 650-303-2070 or roxanewales@gmail.com.

-R.Wales, Clerk of Session

COMMUNITY ACTION/LIFECOMMITTEE

News about our Partnership with Iglesias Brasiliana – San Mateo: We continue to collect items for Iglesias Brasiliana, our partner in San Mateo. Here is the current “needs” list from Pastor Jorge:

Bottled water
Rice and pinto beans
Canned tomato sauce, diced tomatoes, or tomato paste
Olive or avocado oil
Paper products
Canned fruit
Peanut butter, jam, or jelly

On Friday, November 19, a delivery was made to IYB which included: pinto beans, rice, canned diced tomatoes, canned peaches, misc. toiletries, two cases of water, towels and other misc. household goods, and a shopping bag full of various new cosmetics and beauty products. Thanks to all who contributed items to our November delivery. Pastor Jorge and friends were again grateful for all the contributions.

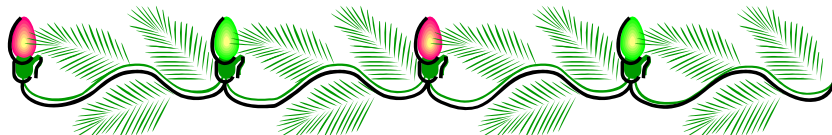
In December, we will provide \$25 Safeway and Target gift cards for 40-50 families and each family will receive a medium-sized box of See’s candy. If you would rather provide money, the Community Action team will purchase the gift cards. We will make our IYB delivery on Friday, December 17, so **all December contributions need to be brought to church no later than Wednesday, December 15.**

We will also collect toys for the 40 children ages toddler to 10 years old. Ideas include balls, puzzles, books, games, stuffed toys, dolls, trucks, etc. When choosing gifts for the children, think about something with a longer life that might be shared or passed on to someone else when outgrown, and made from a sustainable material.

Please continue to pray for the IYB congregation and consider how you might help.

Ongoing we will be providing funds from our Fund-a-Vision grant to the Catholic Worker Hospitality House (the San Bruno Shelter) for various needs. We expect to make our fifth payment of \$5,000 in December or January.

This year, in lieu of a sit-down Thanksgiving dinner at Bethany, we had a “drive through” supply collection for the Catholic Worker Hospitality House (the San Bruno Shelter) on **Saturday, November 20**. Many people from the congregation dropped off items. A blessing was offered on Sunday, November 21 for the CWHH. (Included were also items brought to the church in November on Sundays leading up to November 21). Thanks to everyone who contributed to this effort. Peter Stiehler, CWHH Director, was again touched by the generosity of our congregation.



Financial Trustees Report

October

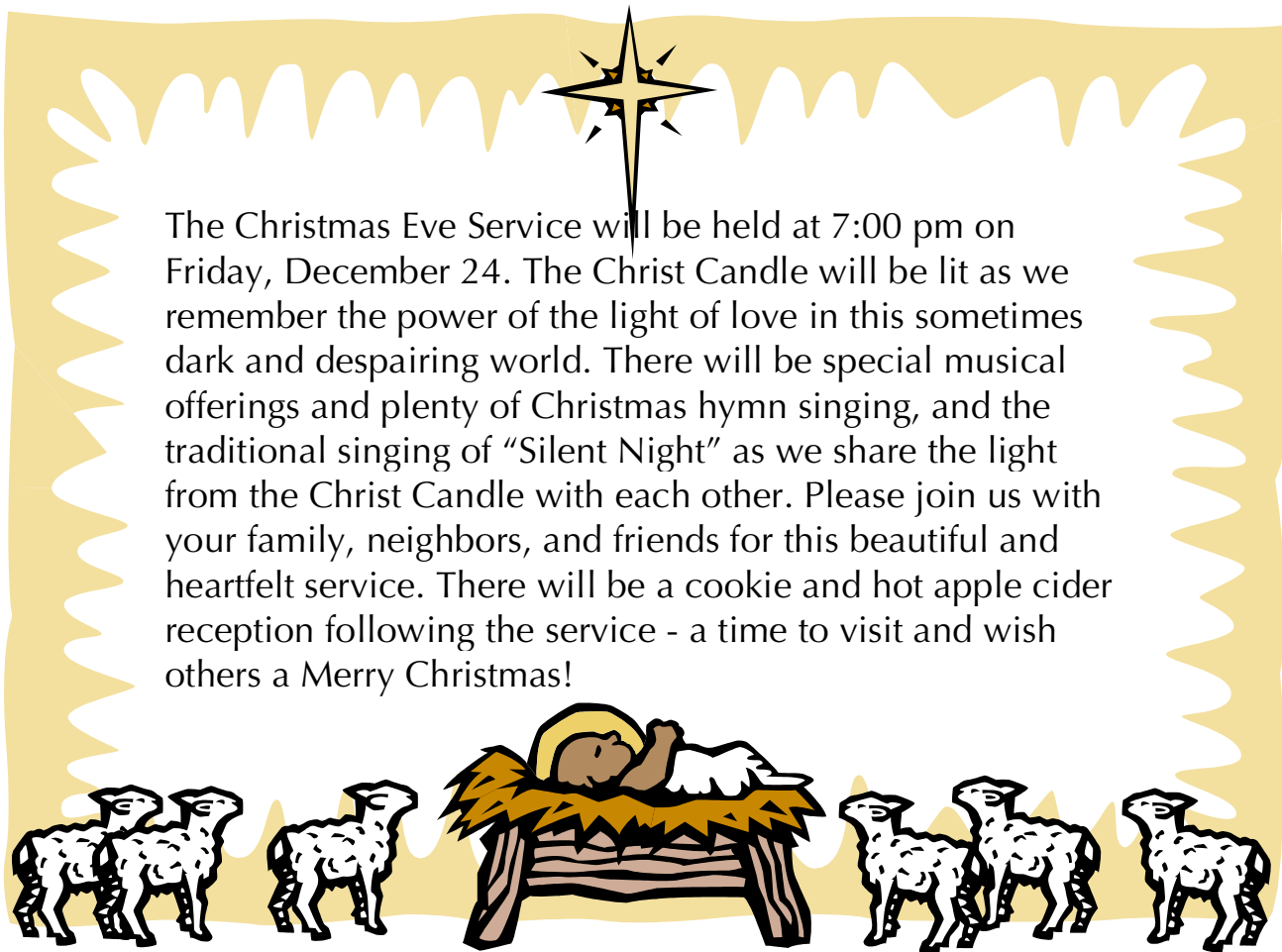
\$ 18,732.00 Income
\$(14,132.05) Expense
\$ 4,599.95 Difference

YTD

\$149,963.00 Income 100.247%
\$(145,894.44) Expense (96.503)%
\$ 4,068.56 Difference 3.744%

Thank you for your continued contributions to the church, whether that be time, talents, offerings, energy, prayers, etc. Questions about the BPC budget: Contact Lyn Hughes, Ken Henry, Dave Wales, or Bonnie Morgan. Questions about our tenant, the Sikh Association: Contact either the Financial Trustees (Lyn Hughes , Ken Henry, Dave Wales or Bonnie Morgan) or Buildings and Grounds (Dave Wales)

If you have not turned in your 2022 Stewardship pledge card, please do so at your earliest opportunity so the Trustees may complete the 2022 budget.



Christmas and Advent at Bethany: We have some long-held traditions at Bethany in this season, and they've been going on for so long, you may not be aware of some of them, or their origins.

For instance, did you know that the beautiful nativity scene in the narthex was a gift from Bee Parker, in memory of her husband Vern?



Take a look at the Christmas tree ornaments. There are names, and dates on many of them! Over the years, families and individuals have donated ornaments for our tree. YOU are welcome to do the same! If you'd like to add an ornament to our collection, please do. Tag it with your name, and the current year, and we will think of you when we hang it up, year after year.

Are there things that we do at Bethany, and you've wondered how and why we do that? Please ask - if we know the answer, we'll share it here! Are there any other traditions that you would like to add to Bethany's practices? Just let us know! You can talk to an elder, or someone on the corresponding committee - and of course, be willing to roll up your sleeves to help make it happen.

Happy Birthday to these wonderful folks born in the month of December!

- 3 Jean Edge
- 8 Tom Jessee
- 8 Molly Lyons
- 11 Abigail Huseth
- 12 North Hollenbeck
- 15 Nancy Landauer
- 26 Patty Hughes
- 31 Judy Nelson



December Anniversaries

- 4 Sharon & Larry Gruner
- 17 Kelsy & Kenny Parker
- 29 Nelson Schlater & Alicia McHale

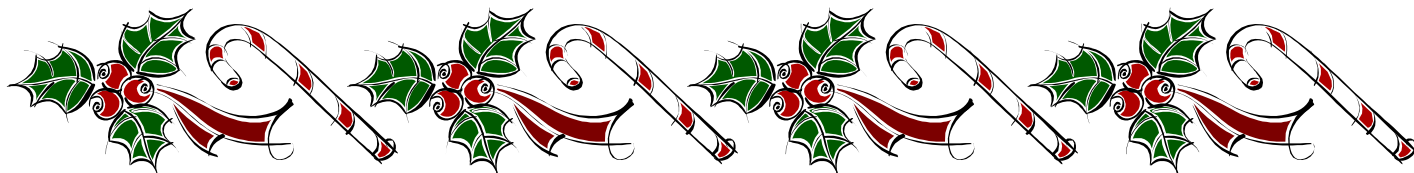
We remember these Saints of Bethany who were born in December:

- 1 Be Harlan
- 25 Mary Caley
- 27 Merriam Wycoff

Due Dates

For W@B: Tuesday morning.

For the monthly newsletter: the Tuesday before the last Wednesday of the month.



Bethany's Purpose Statement:

Bethany's purpose is to provide a nurturing and energizing environment to feed the soul so we can go out into the world and reflect the glory of God, the love of Jesus Christ, and the power of the Holy Spirit.

Bethany's Welcoming Statement:

We don't yet know who you are,
but we do know that you are a dearly beloved child of God,
and you're already welcome here.
We invite you, on your unique spiritual journey,
to join us in the life and ministry at Bethany.

Bethany Presbyterian Church is a member of More Light Presbyterians
<https://mlp.org>



2400 Rosewood Drive, San Bruno, CA 94066
(650) 589-3711 ~ bethanypres@bethanypcusa.org
Website: bethanypcusa.org



MORE LIGHT
PRESBYTERIANS